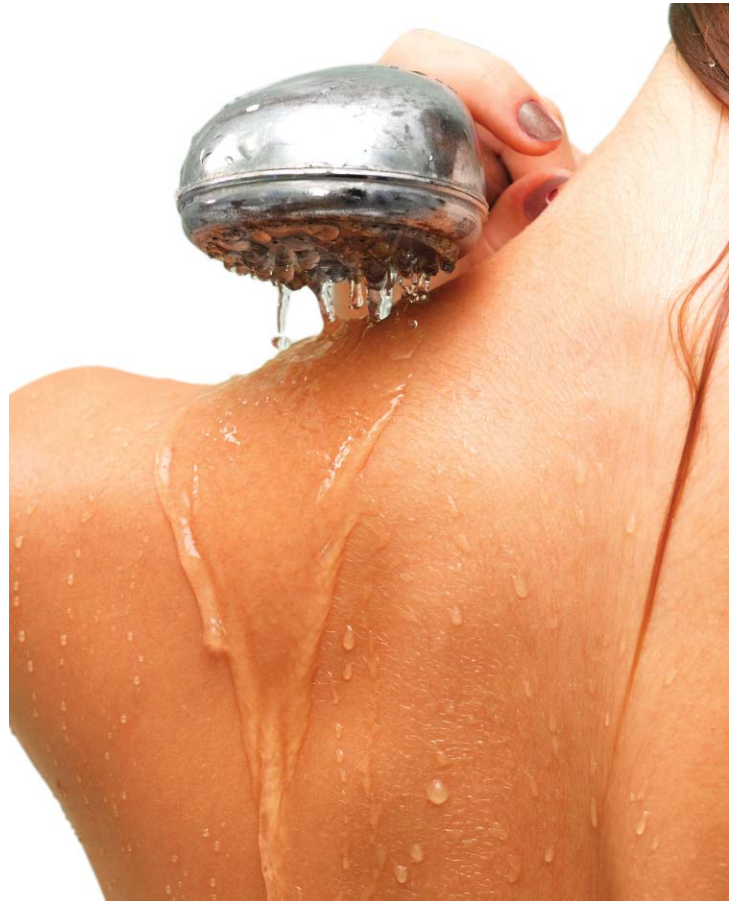




PROFILE OF INNOVATION

Schluter®-Shower System



Waterproofing system for tiled showers, steam showers, and bathtub surrounds



The timeless beauty of ceramic and stone tiles enhances the aesthetics of any bathroom. Tiled showers, steam showers, and bathtub surrounds are luxurious and elegant and add to the value of your home. From modern to rustic, contemporary to eclectic, tiles are available in a vast selection of sizes, colors, shapes, and textures, allowing for limitless creativity in design.

But tiles are not only beautiful; they are also highly functional. Ceramic and stone tiles are durable, easy to clean, and hygienic, making them an ideal choice for wet areas. With a reliable waterproofing system in place, a tiled bathroom provides the ultimate in practical as well as aesthetic appeal.



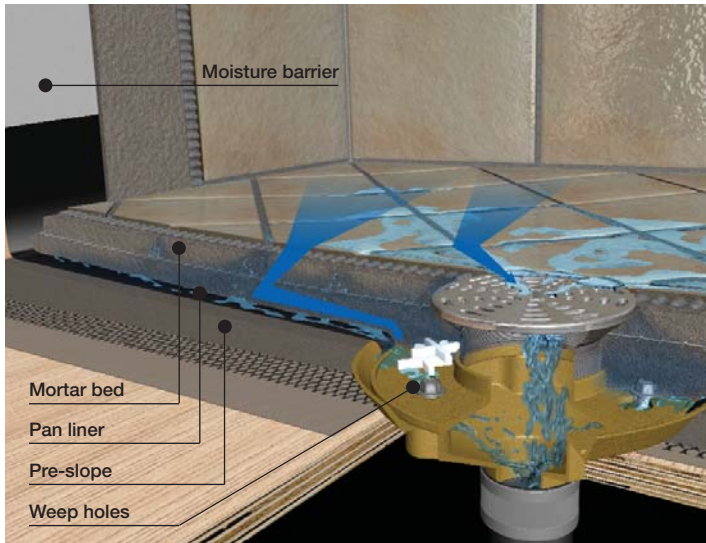
The Schluter®-Shower System was featured on *This Old House* and *Ask This Old House*.

Waterproofing is the foundation of a successful tiled bathroom. Moisture-sensitive construction materials such as wood framing, plywood or OSB sheathing, gypsum wallboard, etc. must be protected from water and vapor penetration. Wet areas increase the potential for mold growth if effective moisture management is not provided. The key to mold control is moisture control.

The traditional system



Pan liner method



The traditional method for installing tiled showers is both time- and labor-intensive and requires many steps to ensure success.

First, a mortar bed is sloped to the **weep holes** in the drain. The waterproofing membrane, called a **pan liner**, is placed over this “**pre-slope**” and clamped into the drain. The pan liner is carried over the curb and up the walls about 3 inches above the curb. A **moisture barrier**, such as tar paper or plastic sheeting, is placed on the walls and lapped over the pan liner.

This completes the waterproofing system installation. However, additional prep work is required because the waterproofing materials used in this system do not allow for the direct application of tile. A **mortar bed** is placed over the pan liner, and the walls are covered with mortar or tile backerboard. These materials provide a support layer and bonding surface for the tile.

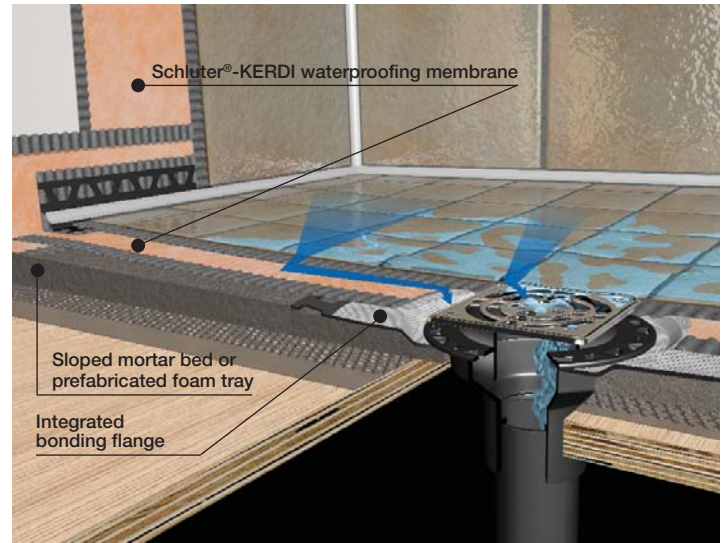
Contrary to popular belief, the tile covering itself is not waterproof. When the shower is in use, water and vapor will penetrate the mortar bed and tile backing on the walls. This moisture must seep through the mortar bed to the sloped pan liner and exit through the weep holes in the drain. In this way, the assembly can be described as a “water-in/water-out” system.

With regular use of the shower the mortar bed can remain soaked, particularly if the pre-slope installation is ignored or the weep holes in the drain become clogged. With no way to escape, the water will continue to build up. The continued presence of moisture increases the potential for efflorescence and mold growth within the system.

Schluter®-Shower System



Bonded waterproofing



The Schluter®-Shower System is an integrated family of products that improves on the traditional system by simplifying tiled shower installations.

The process begins with the installation of solid backing panels (e.g., gypsum panels or tile backerboards) on the walls and either a **sloped mortar bed or the prefabricated Schluter®-KERDI-SHOWER-ST shower tray** on the floor. These materials provide the support for the waterproofing system and the tile.

Now the waterproofing application begins. The Schluter®-KERDI-DRAIN is installed on top of the mortar bed or the shower tray. Then the **Schluter®-KERDI waterproofing membrane** is bonded to the surfaces of the walls and base, including the KERDI-DRAIN. The KERDI-DRAIN features a large, **integrated bonding flange** that ensures a secure connection to the KERDI waterproofing membrane. Unlike the waterproofing materials used in the traditional system, tile can be set directly on the KERDI membrane using thin-set mortar.

This is what makes the Schluter®-Shower System unique. The waterproofing system is installed on top of the backing materials rather than below. This eliminates the potential for moisture to seep into the mortar bed or the tile backing on walls, and thus allows the tile covering to dry between uses. The integrated Schluter®-Shower System eliminates leaks, reduces the potential for efflorescence and mold growth in the system, and dramatically reduces total installation time to ensure success and make shower installation easier than ever.

The essentials of waterproofing

The Schluter®-KERDI waterproofing membrane and Schluter®-KERDI-DRAIN form the principal foundation for the Schluter®-Shower System, which creates a fully waterproof and vaportight enclosure in tiled showers, steam showers, and bathtub surrounds.

Schluter®-KERDI

Waterproof

KERDI is a bonded waterproof membrane that allows the direct application of tile and protects the shower base and solid backing on walls from water and moisture penetration. KERDI meets the requirements of ANSI 118.10.

Vapor retarder

KERDI has a vapor permeance of 0.75 perms and effectively manages water vapor in tiled shower and steam shower applications.

Durable

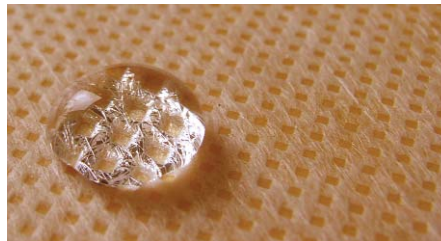
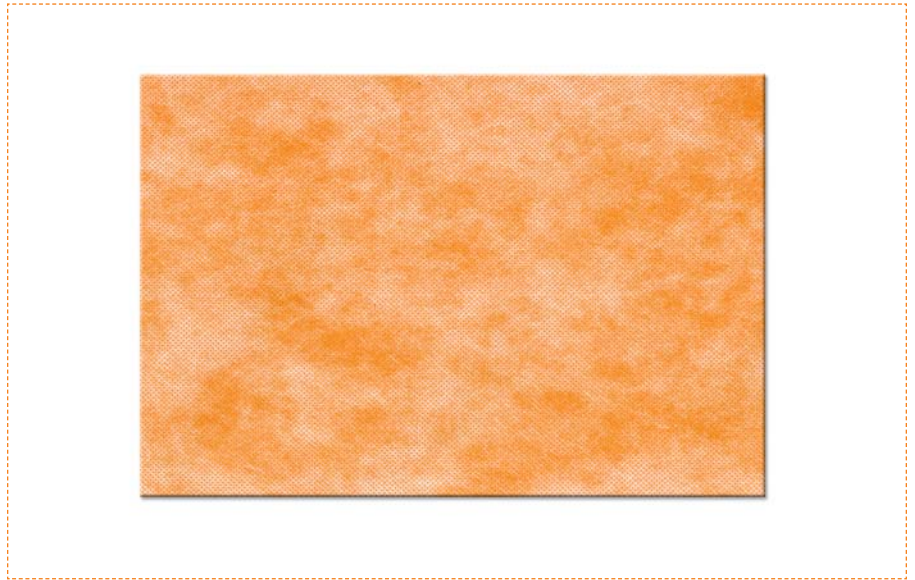
KERDI, which is resistant to chemicals typical in showers, will not support mold growth and will not rot or degrade over the life of the tile assembly.

Simple installation

As a sheet membrane, KERDI guarantees uniform thickness for reliable installation. It hangs as easily as wallpaper and is very pliable.

Product evaluation and listings

- ICC-ES (ESR-2467)
- cUPC®



Schluter®-KERDI-DRAIN

Designed for bonded waterproof membranes

The integrated bonding flange ensures a secure connection to the KERDI membrane at the top of the assembly.

Reduces installation time and labor

Eliminates the prep work required for a traditional two-step mortar pan.

Adaptable

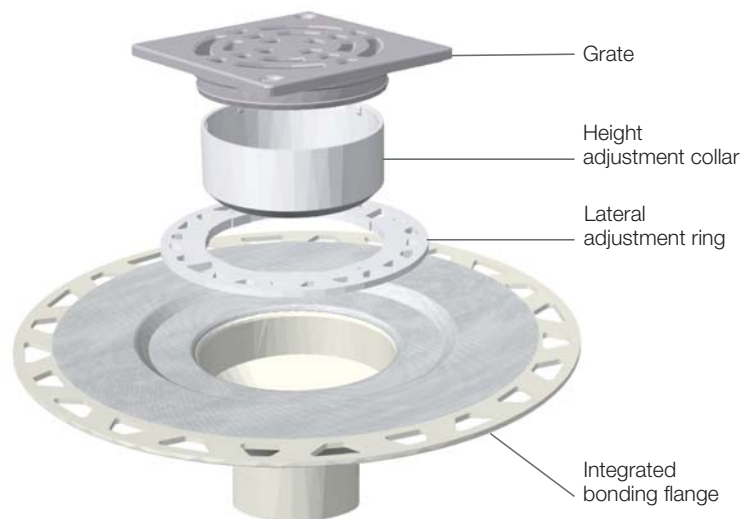
Appropriate for both mortar bed and KERDI-SHOWER-ST foam tray installations. Ideal for new construction and renovation work.

Designed specifically for tile

Fully adjustable grate (vertical, lateral, and tilt) simplifies tile layout and installation. Square grate minimizes awkward cuts around the drain.

Product evaluation and listings

- UPC®
- CSA
- NSF



Anodized Aluminum Grates



4"
Copper



4"
Nickel



4"
Brass



4"
Oil-rubbed bronze



4"
Polished



6"
Polished

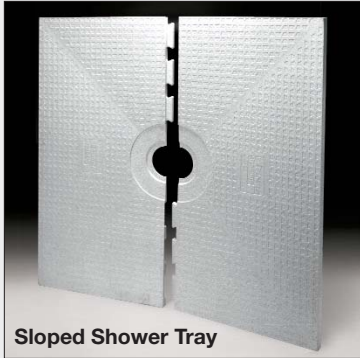


6"
Polished

Stainless Steel Grates

Building a beautiful, durable, and functional tiled shower

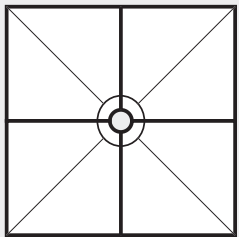
1 Create your design and choose your substrate



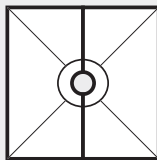
Schluter®-Systems' prefabricated foam shower substrates provide a lightweight and easy-to-install alternative to the traditional mortar bed. They can be cut to size to fit various applications. The sloped shower tray is available in 4 different formats.

Shower trays

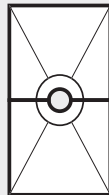
CENTER DRAIN



72" x 72"



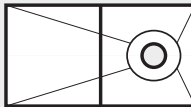
48" x 48"



32" x 60"

OFF-CENTER DRAIN

Designed for bathtub replacement



32" x 60"

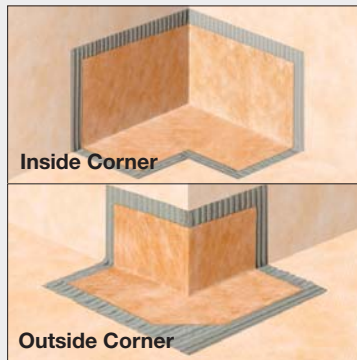


2 Make it watertight

Schluter®-KERDI products protect against water and vapor penetration to ensure successful tiled shower installation.



Schluter®-KERDI is a bonded waterproofing membrane and vapor retarder that is pliable and easy to install. Made of inorganic materials, KERDI will not promote mold growth and does not degrade over time. Schluter®-KERDI-BAND is used to seal butt joints and floor/wall connections, and is half the thickness of KERDI to limit buildup.

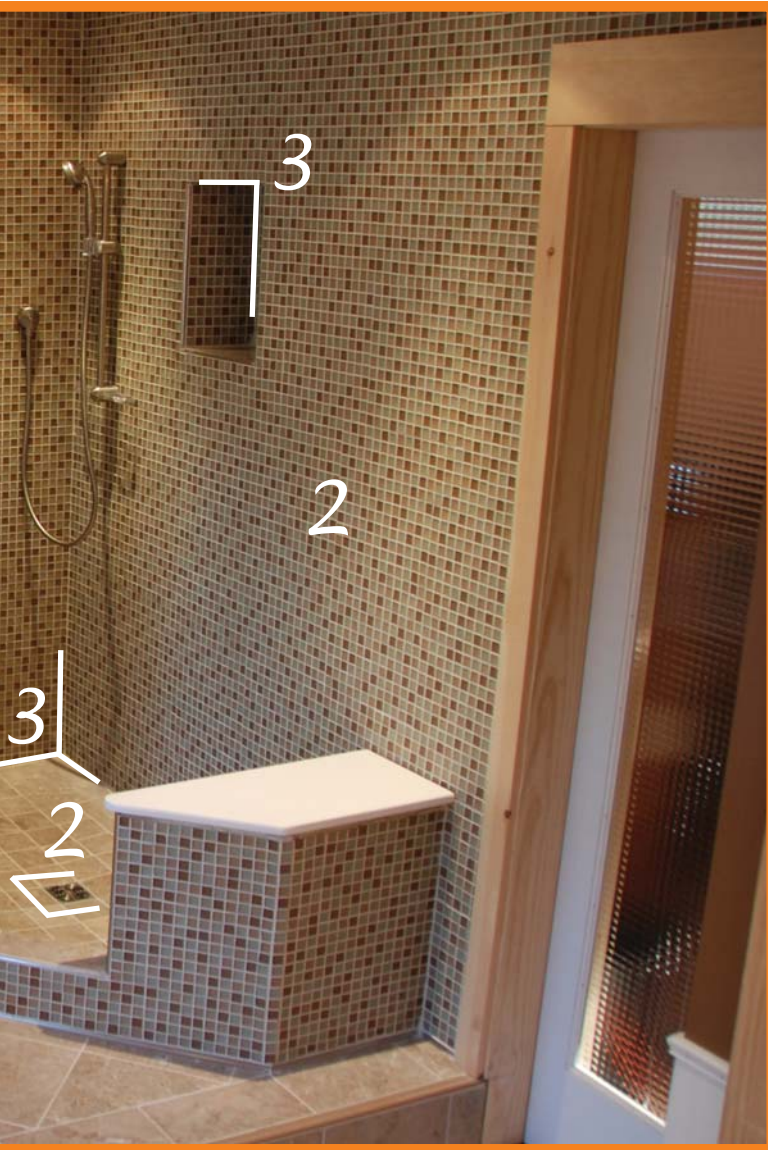


Schluter®-KERDI-KERECK-F preformed, seamless corners make it easy to waterproof inside and outside corners.

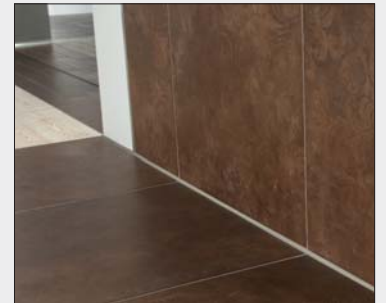


Schluter®-KERDI-DRAIN ensures a secure connection to the KERDI waterproofing membrane at the top of the assembly.

ower in 3 simple steps



3 Finish and protect your tile installation with profiles



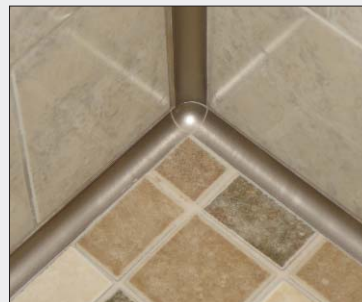
Profiles for inside corners

Inside corners tend to accumulate dirt, making them difficult to clean. In addition, they are often treated with unsightly caulking, which must be replaced over time. Schluter®-DILEX cove-shaped profiles create a smoothly rounded inside corner that makes cleaning a breeze. The DILEX-EKE inside corner profile produces a discreet straight line that mimics a grout joint. Both styles of profile eliminate the need for caulking, producing a permanent, maintenance-free installation.



Profiles for outside corners and tile edges

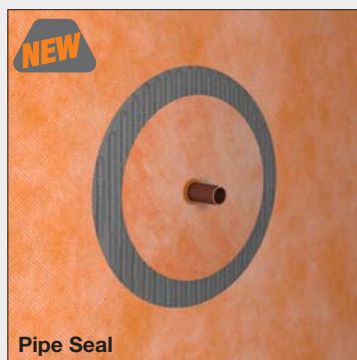
Exposed tile edges are unsightly and prone to chipping if left unprotected. The Schluter®-QUADEC square-shaped profile and Schluter®-RONDEC symmetrically rounded profile protect and finish tile edges for visually appealing and long-lasting results. Edging profiles eliminate the need for special ceramic trim pieces, so you can select virtually any tile in the showroom.



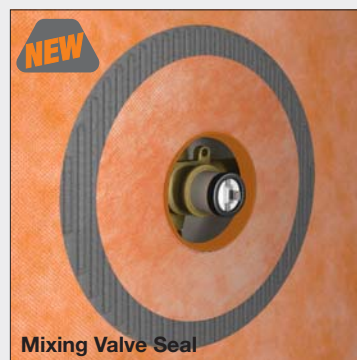
Details make the difference!

Prefabricated corners and end caps are available for most Schluter®-Profiles. These specialized accessories eliminate the need for miter cuts, thus eliminating gaps and sharp edges. Prefabricated corners and end caps simplify installation and provide a polished, professional result.

allations.



Pipe Seal



Mixing Valve Seal

Pipe and mixing valve protrusions can be tricky areas to waterproof. Schluter®-KERDI-SEAL-PS and -MV prefabricated seals are the perfect solution. These sections of KERDI membrane with overmoulded rubber gaskets ensure a permanently watertight seal at pipe and mixing valve protrusions without the need for messy sealant.

Schluter®-Systems profiles are available in a wide range of colors and metal finishes to complement your design.

Typical applications (for representative purposes only)

Shower assembly



- 1 Ceramic or stone tile
- 2 Schluter®-KERDI waterproofing membrane
- 3 Schluter®-KERDI-BAND waterproofing strip
- 4 Schluter®-KERDI-KERECK-F waterproofing corners
- 5 Schluter®-KERDI-SEAL or Schluter®-KERDI-FIX sealant and bonding compound
- 6 Schluter®-KERDI-DRAIN
- 7 Schluter®-KERDI-SHOWER-ST/-SC prefabricated tray and curb or mortar bed and built-up curb

Bathtub surround



Other applications

- Steam showers
- Barrier-free applications, including disabled access
- Bathtub retrofit

Proven track record since 1987

Schluter®-Systems has been providing innovative solutions for tile installation since 1975. The introduction of Schluter®-KERDI in 1987 revolutionized the way that tiled showers were built. Its performance has been verified through extensive laboratory testing and field experience. The Schluter®-Shower System has earned its reputation as the most reliable waterproofing system for tile installation available today.

USED BY HOMEOWNERS



"6 years ago, a contractor built my tiled shower using the traditional pan liner system. A year later, mold started to appear in the grout joints on the floor and bench areas. After removing the tiles, the cement base and part of the walls were completely wet, and, in some areas, covered with mold. The contractor assured me that by using the Schluter®-Shower System I would not encounter this problem again. It has now been 4 years, and my shower looks as good as the first day I used it!"

Caroline Brunet
Homeowner

USED BY CONTRACTORS



"We first began using the Schluter®-Shower System 6 years ago, and now we use it on all standard and steam showers. Compared to traditional methods, this system is truly waterproof, as it eliminates mold and mildew problems. Whether we are installing a regular ceramic or a high-end stone, we always regard surface preparation as being paramount."

Hugo Sanchez
Tile Installation Company

IN THE MEDIA



"...the best shower kit on the market..."

Winnipeg Free Press

"...It's a reliable, watertight shower system that can be installed in half a day versus two days for a traditional mud-set shower..."

The Oregonian



Complete installation instructions

The Schluter®-Shower System Installation Handbook contains complete details and illustrations for tiled shower, steam shower, and bathtub surround applications, and supplementary information on topics such as vapor management, mold control, barrier-free showers, profiles, and thin-set mortars. Step-by-step installation instructions are also available on DVD.



To obtain or download a free copy of the Schluter®-Shower System Installation Handbook or DVD, visit www.schluter.com or call 1-800-472-4588 (US) or 1-800-667-8746 (CAN).



Looking for design and installation ideas?

Visit the

Schluter® Virtual House

The Schluter® Virtual House is an interactive and educational website that allows you to navigate through the rooms of a house and discover a variety of tile installations. It is the site to visit prior to starting any tile project.

LEARN about the products you'll need to complete your tile project, including profiles and uncoupling/waterproofing membranes.

CHOOSE the products that are appropriate for your tile application.

BUILD your projects with the help of our experts.

With these three simple steps, the Schluter® Virtual House helps you become the master of your tile project!



www.schluterhouse.com



PROFILE OF INNOVATION

Schluter Systems L.P.
194 Pleasant Ridge Road, Plattsburgh, NY 12901-5841
Tel.: 1-800-472-4588 • Fax: 1-800-477-9783
e-mail: info@schluter.com

Schluter Systems (Canada) Inc.
5626 Thimens Blvd., St-Laurent, QC H4R 2K9
Tel.: 1-800-667-8746 • Fax: 1-514-336-2410
e-mail: info@schluter.com

www.schluter.com